



AppleShare

Features

Powerful file and print services

- Lets users store their files and applications in a single, central location
- Makes it easy and efficient to print documents to networked printers
- Provides comprehensive, easy-to-implement security

Ease of use

- Installs with a single click of the mouse
- Can be up and running in minutes
- Makes day-to-day management quick and easy
- Users can take advantage of file and print services from either Macintosh computers or Windows software-based PCs
- Allows users to work in the operating system environment with which they are most familiar (Mac OS or Windows)

Compatibility

- Includes full support for both Macintosh and Windows clients
- Macintosh client built into the Mac OS; Windows client sold separately
- Server works with all Mac OS-compatible applications

Performance and scalability

- Supports up to 150 users
- Performs up to 10 times faster than built-in Mac OS file sharing
- Can be configured for use in an AppleTalk network of any size
- Is scalable from LocalTalk to Ethernet networks, and beyond
- Offers highest performance when running on PowerPC-based Workgroup Servers

AppleShare is high-performance, easy-to-use file and print sharing software that allows networked Macintosh and Microsoft Windows software-based computers to share files, applications, and printers.

With AppleShare file server software, organizations can store all of their shared files and applications in a single, central location, providing convenient, easy access to every user on the local area network. By allowing networked users to centralize all key files and applications for easy sharing, AppleShare improves everyone's productivity. It eliminates time spent looking for files, worrying about misplaced documents, and determining the file or application version.

AppleShare print server software offers all users queued access to up to five networked printers. This time-saving function allows users to be more productive because they can use their computers to tackle other tasks instead of waiting for documents to print.

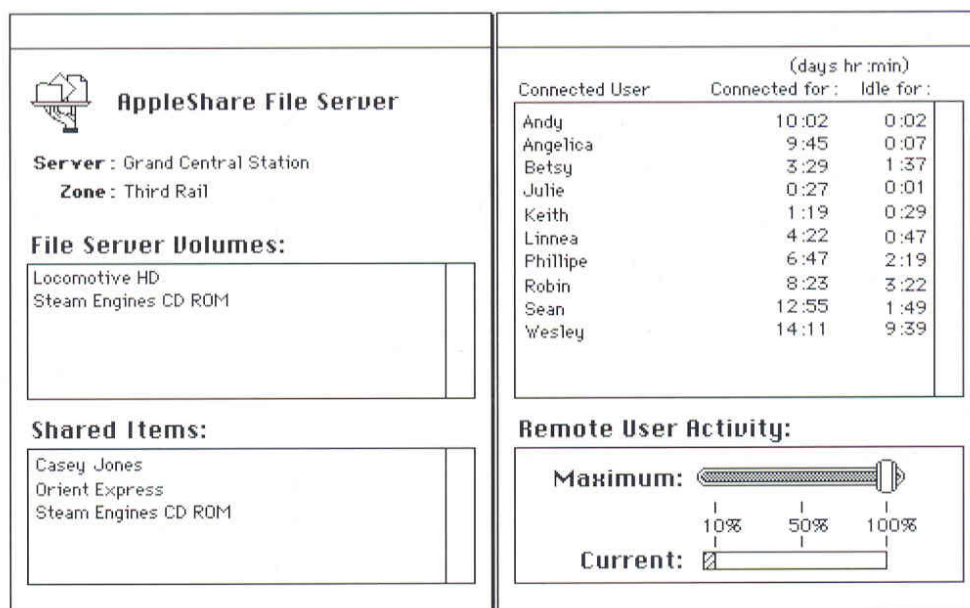
Now, all networked users can connect easily to an AppleShare server. AppleShare lets Macintosh users access shared resources via the Mac OS, and

Windows software-based computers users via the Windows interface.

AppleShare's network architecture coexists with other application programs and networking services such as Novell NetWare, Windows for Workgroups, and even the Internet.

Yet for all of its power and capabilities, AppleShare is extremely reliable and easy to set up, use, and maintain. It continues in the "plug and play" tradition established by the Macintosh more than a decade ago; most system administrators find that they can get an AppleShare server up and running within 15 minutes. And overall maintenance—including the addition and deletion of users—is so simple that a dedicated, full-time administrator is not required. In fact, because AppleShare is so easy to install, maintain, reconfigure, and expand, it offers the lowest long-term cost of ownership of any product in its class.*

Whether your organization is a small or medium-size business, a classroom, or a department within a global enterprise, AppleShare improves collaboration and increases efficiency for all users.





AppleShare

Ordering and Licensing Information

AppleShare 3.0.1

Order No. M0090LL/B

AppleShare 4.0.2

Order No. M3995Z/A

AppleShare 4.1

(Included in some PowerPC-based Workgroup Server configurations)

AppleShare Client for Windows

Order No. M3481Z/A

(Also included in PowerPC processor-based Workgroup Server configurations; client network license is included and allows the installation of the client software on any Windows software-based PC on the network)

For more information about AppleShare, call Apple Business Systems at (408) 862-3385 or send electronic mail to: ABS.NETINFO@applelink.apple.com

Product specifications are subject to change. Check with your Apple reseller for the most current information about product specifications and configurations.

AppleShare Product Family

AppleShare software comes in three versions that are designed to accommodate a variety of workgroup sizes and performance needs.

AppleShare 3.0.1 is designed for smaller workgroups of Macintosh and Windows software-based computers that have outgrown the basic file-sharing capabilities of the Mac OS. It runs on 68030-based, or earlier, Macintosh computers.

AppleShare 4.0.2 offers significant performance improvements over AppleShare 3.0.1, and runs on 68040-based Macintosh computers. Like AppleShare 3.0.1, it's appropriate for smaller, cross-platform workgroups that want to move beyond simple Mac OS file sharing and is extremely easy to set up and administer.

AppleShare 4.1 is the highest-performance AppleShare version available. Designed for Apple PowerPC processor-based Workgroup Servers, it offers outstanding performance and functionality, yet retains the ease of use shared by the other product offerings in the AppleShare family.

Product Details

Capabilities and services

- Includes file and print servers
- Supports Mac OS program linking and publish and subscribe
- Features an open environment that allows additional network services
- Macintosh client software built into every Macintosh; Windows client software sold separately

Sharing options

- On-line CD-ROM exchange
- Sharing of folders or entire disks
- Easy server selection through the Chooser
- Intuitive, consistent access to shared resources
- User-controlled access to information

Print spooling

- Provides spooling for up to five networked printers
- Offers centralized queue management
- Accepts simultaneous print requests
- Frees client workstations for use immediately
- Includes print log for up to 1,000 print jobs

Administrator control

- Administrator can set number of connected users
- Server messages can be broadcast or sent to selected users
- Administrator can set cache sizes to maximize performance




Security

- Minimum password length
- Password aging
- Password history to prevent immediate reuse
- Ability to disallow saved passwords
- Account disabled after specified number of password failures
- Adjustable time limit for temporary accounts
- Guest access allowed; turned off by default
- Copy-protection setting for documents
- "Lock" setting for folders
- Adjustable number of concurrent application launches
- Inherited folder privileges
- Administrator log-off of any user






AppleShare Specifications

	3.0.1	4.0.2	4.1
Concurrent logons	120	150	150
Open files	346	346	346
Users	8,192	8,192	8,192
Groups	8,192	8,192	8,192
Users in group	8,191	8,191	8,191
Groups per user	42	42	42
Locked ranges/user	20	20	20
Apple II logon	yes	yes	yes
Apple II network startups	40	n/a	n/a
Minimum RAM	4MB	8MB	16MB
System software	7.0	7.1	7.5

How users view shared data:

-  Full access privileges
-  Drop folder, write capability only
-  No access privileges

How users protect their data:

-  Can't see enclosed folders
-  Can't see enclosed files
-  Can't write to folder
-  Can't write to or see folders
-  Can't write to or see files

Supported platforms

AppleShare Server

- AppleShare 3.0.1: 68030-based (or earlier) Macintosh computers
- AppleShare 4.0.2: 68040-based Macintosh computers*
- AppleShare 4.1: PowerPC processor-based Workgroup Servers

AppleShare Client

Macintosh

- An Apple Macintosh computer with an internal hard disk drive and at least 4MB of RAM
- Mac OS software version 6.0.7 or later
- System 7.5 required for performance of AppleShare 4.1

Windows

- Any IBM or 100 percent compatible computer running Intel processor 386 or greater; ISA, MicroChannel, VISA, and EISA internal buses; 4MB of RAM
- Windows 3.1, 3.11, or Windows for Workgroups 3.11 software
- MS-DOS 5.0 or later
- Ethernet network adapter card
- NDIS 3.0 or ODI network interface driver

Network requirements

- An AppleTalk network connection (via LocalTalk, Ethernet, Token Ring, or Apple Remote Access software); Windows software-based computers must be connected via Ethernet

*AppleShare 4.0.2 is not designed to run on the Macintosh Quadra 660AV and Macintosh Quadra 840AV computers.

Apple Computer, Inc.
1 Infinite Loop
Cupertino, CA 95014
(408) 996-1010
TLX 171-576

© 1995 Apple Computer, Inc. All rights reserved. Apple, the Apple logo, AppleShare, AppleTalk, A/UX, LocalTalk, Macintosh, and Macintosh Quadra are trademarks of Apple Computer, Inc., registered in the U.S.A. and other countries. Mac and the Mac OS logo are trademarks of Apple Computer, Inc. PowerPC is a trademark of International Business Machines, Inc., used under license therefrom. Mention of non-Apple products is for informational purposes only and constitutes neither an endorsement nor a recommendation. Apple assumes no responsibility with regard to the selection, performance, or use of these products. All understandings, agreements, or warranties, if any, take place directly between the vendors and the prospective users.
April 1995. Product specifications are subject to change without notice. Printed in U.S.A.
100212G